

IS 345 MX Highbay

COM1 - surface, sq.

EAN 4007841 010492

Article number 010492

infrared sensor
360°

max. 30 x 4 m

2000 W

2000 W max. (LED-
ready)

IP54



2 - 1000 lux



5 sec - 15 min



manual override 4h

Teach

Teach mode



energy saving

5 years

manufacturer's
warranty steinel-
professional.de/
garantie

Function description

Surveillance on the highest level. Infrared motion detector IS 345 MX Highbay for indoors, ideal for large heights in depots, high-bay warehouses, machine shops, check-in areas and departure lounges, installation height 16 m, detection zone 30 x 4 m (radial), large terminal compartment for easy installation, heavy-duty relay for high switching capacity. Available as square surface-mounted and concealed version.

Technical specifications

Dimensions (L x W x H)	65 x 95 x 95 mm	LED lamps > 2 W < 8 W	300 W
Manufacturer's Warranty	5 years	LED lamps > 8 W	600 W
Settings via	Remote control, Potentiometers, Smart Remote	Capacitive load in µF	176 µF
With remote control	No	Sensor Technology	Passive infrared
Version	COM1 - surface, sq.	Mounting height	4,00 – 16,00 m
PU1, EAN	4007841010492	Mounting height max.	16,00 m
Type	Motion detectors	Optimum mounting height	12 m
Application, place	Indoors	Detection angle	Aisle, 360 °
Application, room	high-bay warehouse, Indoors	Angle of aperture	90 °
Colour	white	Sneak-by guard	Yes
Colour, RAL	9003	Capability of masking out individual segments	Yes
Includes corner wall mount	No	Electronic scalability	No
Installation site	ceiling	Mechanical scalability	No
Installation	Surface wiring, Ceiling	Reach, radial	30 x 4 m (120 m ²)
IP-rating	IP54	Reach, tangential	30 x 4 m (120 m ²)
Ambient temperature	-20 – 50 °C	Switching zones	280 switching zones

IS 345 MX Highbay

COM1 - surface, sq.
EAN 4007841 010492
Article number 010492



Technical specifications

Material	Plastic	Functions	Normal / test mode, Manual ON / ON-OFF
Mains power supply	220 – 240 V / 50 – 60 Hz	Twilight setting	2 – 1000 lx
Switching output 1, resistive	2000 W	Time setting	5 s – 15 Min.
Switching output 1, number of LEDs / fluorescent lamps	8 pcs.	Basic light level function	No
Fluorescent lamps, electronic ballast	1500 W	Main light adjustable	No
Fluorescent lamps, uncorrected	1000 VA	Twilight setting TEACH	Yes
Fluorescent lamps, series-corrected	400 VA	Constant-lighting control	No
Fluorescent lamps, parallel-corrected	400 VA	Interconnection	Yes
Switching output 1, low-voltage halogen lamps	2000 VA	Type of interconnection	Master/master
LED lamps < 2 W	100 W	Interconnection via	Cable

Accessories

EAN 4007841 009151	Remote control Smart Remote
EAN 4007841 559410	Service remote control RC8
EAN 4007841 056711	Black cover for IR-sensors

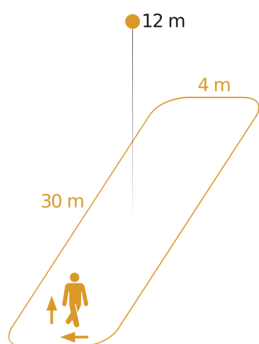
IS 345 MX Highbay

COM1 - surface, sq.

EAN 4007841 010492

Article number 010492

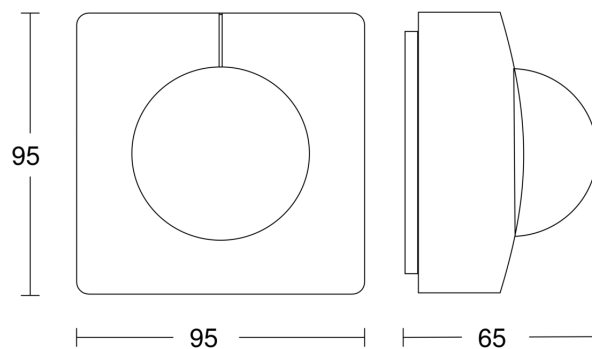
Detection Zone



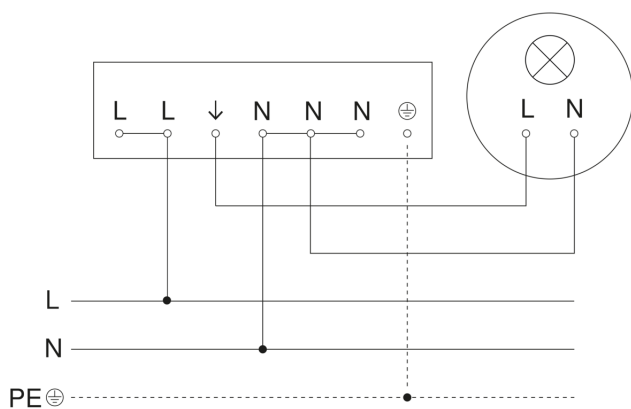
Mögliche Montagehöhe: 4,00 m - 16,00 m

Orange: radial und tangential

Dimension Drawing



Circuit diagram



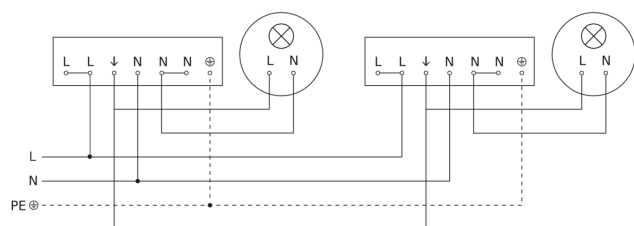
IS 345 MX Highbay

COM1 - surface, sq.

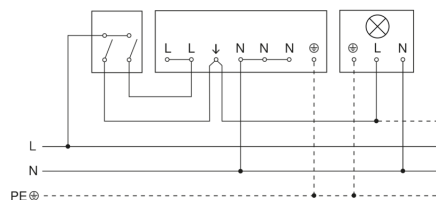
EAN 4007841 010492

Article number 010492

Circuit diagram for interconnecting several sensors



Connection using two-circuit switch for manual and automatic operation



Circuit diagram Connection via a changeover switch for continuous and automatic operation

