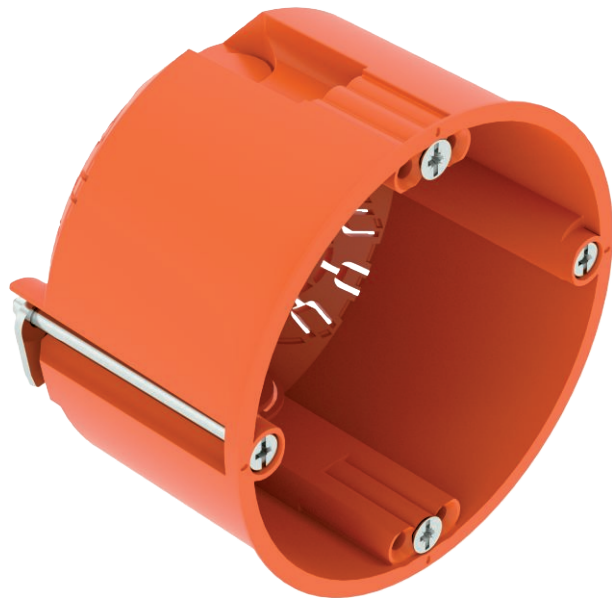


Technical data sheet

HW Cavity wall device box 47

Item no. 2003802



Cavity wall device box for use in cavity walls with an installation depth of at least 47 mm and a plate thickness of 5–40 mm.

- 2 x 3 screw domes
 - Device screws, clamping straps
 - 2 combination pipe entries of \varnothing 20 and 25 mm
 - 2 entries for NYM cables 3 x 1.5 mm
 - 2 entries for NYM cables 3 x 2.5 mm² or 5 x 1.5 mm²
 - Connection with other accessory sockets via connector, type ZH 11-V
- Delivery accessories: 10 x connectors, type ZH 11-V

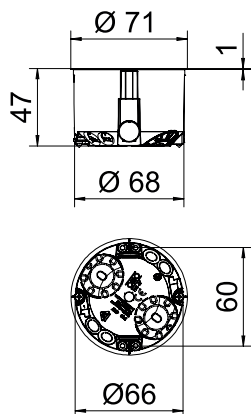


PP Polypropylene

Master data

Item no.	2003802
Type	HG 47
Description 1	HW Cavity wall device box
Available from	01.10.2021
Dimension	\varnothing 68mm, H47mm
Colour	Orange
Material	Polypropylene
Material symbol	PP
Smallest sales unit (VG)	25 Piece
Weight	2,25 kg/100 pc.

Technical data



Height	47,00 mm
Diameter	68,00 mm
No. of entries	6
Number of switch boxes	1
Type of entry	NYM cables, data cables and corrugated pipes
Type of housing penetration	Break-out opening
Version for	Single
Shape	Device socket
Device fixing	Screws ,
Cover	Without
Cover fastening	Screws ,
Milling hole diameter	68,00 mm
Flame-resistant	acc. to VDE 0471/IEC 60695-2-11, test temperature 850°C
Shape	Round
For pipe diameter	20/25 mm
Combination entries \varnothing 20 / 25 mm	2
Cable entries 3 x 2.5 mm ² / 5 x 1.5 mm ²	2
Cable entries 3 x 1.5 mm ²	2
Suitable for board thickness	5,00 - 40,00 mm
Halogen-free	<input checked="" type="checkbox"/>
With bolts	<input checked="" type="checkbox"/>

Technical data sheet

HW Cavity wall device box 47



Item no. 2003802

Technical data

Nominal cross section	1,50 - 2,50 mm ²
Rated voltage	400,00 V
Impact-resistant	<input checked="" type="checkbox"/>
Protection rating	IP30
Support	Connector
Airtight	<input type="checkbox"/>

Table 1




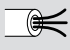
				
	1,5 mm ²	2,5 mm ²	1,5 mm ²	2,5 mm ²
	3		5	4
	9		15	12

Table 1