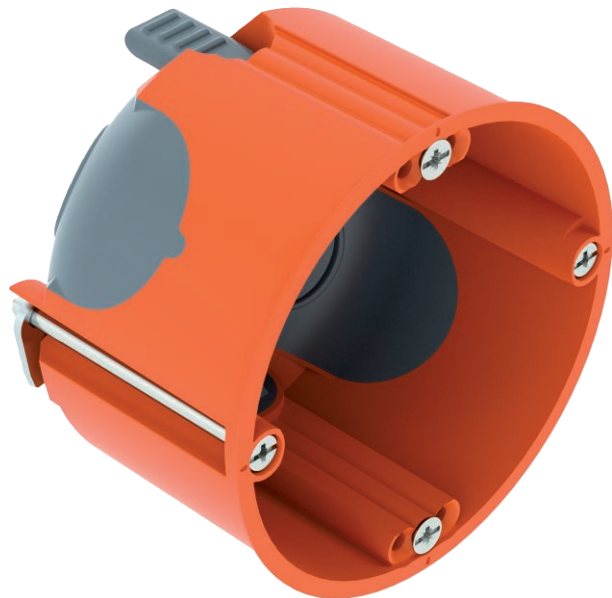


Technical data sheet

HW Cavity wall device box 47, airtight

Item no. 2003806



Cavity wall device box with airtight membrane entries for use in cavity walls with an installation depth of at least 47 mm and a plate thickness of 5–40 mm.

- 2 x 3 screw domes
 - Device screws, clamping straps
 - 2 combination pipe entries of Ø 20 and 25 mm
 - 2 entries for NYM cables 3 x 1.5 mm
 - 2 entries for NYM cables 3 x 2.5 mm² or 5 x 1.5 mm²
 - Airtight connection with other accessory sockets via connector, type ZH 11-V
- Delivery accessories: 10 x connectors, type ZH 11-V

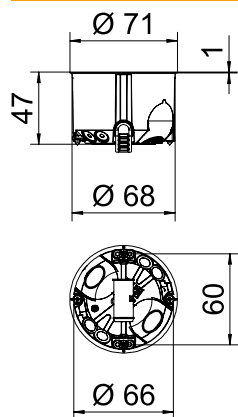


PP/TPE Polypropylene / thermoplastic elastomer

Master data

Item no.	2003806
Type	HG 47-L
Description 1	HW Cavity wall device box
Description 2	airtight
Available from	01.10.2021
Dimension	Ø68mm, H47mm
Colour	Orange / grey
Material	Polypropylene / thermoplastic elastomer
Material symbol	PP/TPE
Smallest sales unit (VG)	25 Piece
Weight	2,41 kg/100 pc.

Technical data



Height	47,00 mm
Diameter	68,00 mm
No. of entries	6
Number of switch boxes	1
Type of entry	NYM cables, data cables and corrugated pipes
Type of housing penetration	Insertion membrane
Version for	Single
Shape	Device socket
Device fixing	Screws ,
Cover	Without
Cover fastening	Screws ,
Milling hole diameter	68,00 mm
Flame-resistant	acc. to VDE 0471/IEC 60695-2-11, test temperature 850°C
Shape	Round
For pipe diameter	20/25 mm
Combination entries Ø 20 / 25 mm	2
Cable entries 3 x 2.5 mm ² / 5 x 1.5 mm ²	2
Cable entries 3 x 1.5 mm ²	2
Suitable for board thickness	5,00 - 40,00 mm
Halogen-free	<input checked="" type="checkbox"/>

Technical data sheet

HW Cavity wall device box 47, airtight

Item no. 2003806



Technical data

With bolts	<input checked="" type="checkbox"/>
Nominal cross section	1,50 - 2,50 mm ²
Rated voltage	400,00 V
Impact-resistant	<input checked="" type="checkbox"/>
Protection rating	IP30
Support	Connector
Airtight	<input checked="" type="checkbox"/>

Table 1




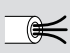
				
	1,5 mm ²	2,5 mm ²	1,5 mm ²	2,5 mm ²
	3		5	4
	9		15	12

Table 1