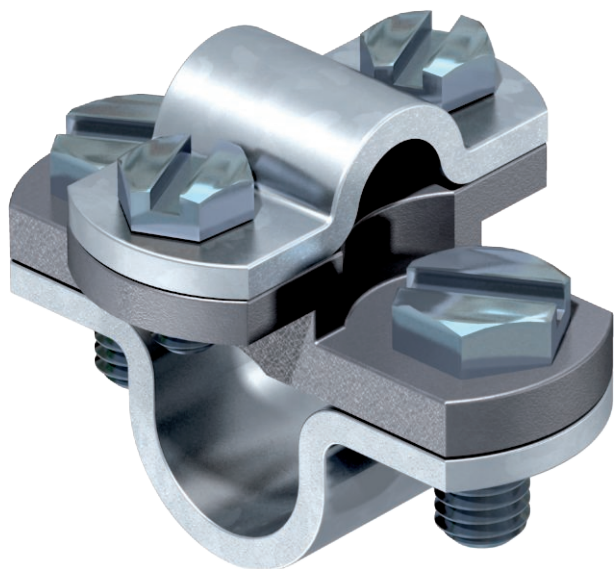


Technical data sheet

Rod clamp

Item no. 5416566



- Rod clamp for connecting round conductors Rd 8–10 to connector rods Rd 16
- Mounted with 2 hexagonal bolts M8 x 16 and M6 x 12
- Adapter from malleable iron
- Crossbar and bolts from hot dip galvanized steel

| | |
|----|--------------------|
| St | Steel |
| FT | Hot-dip galvanised |

Product description

Master data

| | |
|-----------------|--------------------|
| Item no. | 5416566 |
| Type | 108 B DIN |
| Description 1 | Terminal |
| Dimension | 8-10mm |
| Material | Steel |
| Material symbol | St |
| Surface | Hot-dip galvanised |
| Surface to DIN | DIN EN ISO 1461 |
| Surface symbol | FT |
| Weight | 13,97 kg/100 pc. |

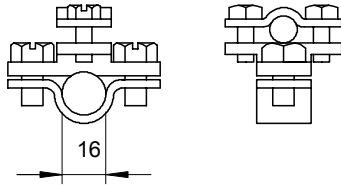
Technical data sheet

Rod clamp

Item no. 5416566



Technical data



| | |
|-------------------------------------|---------------------------------|
| Lightning current carrying capacity | N/50 kA |
| Suitable for connection | Round conductor Rd 8-10 / Rd 16 |
| Fit | Rd 8-10/16 mm |
| Intermediate plate | <input type="checkbox"/> |

